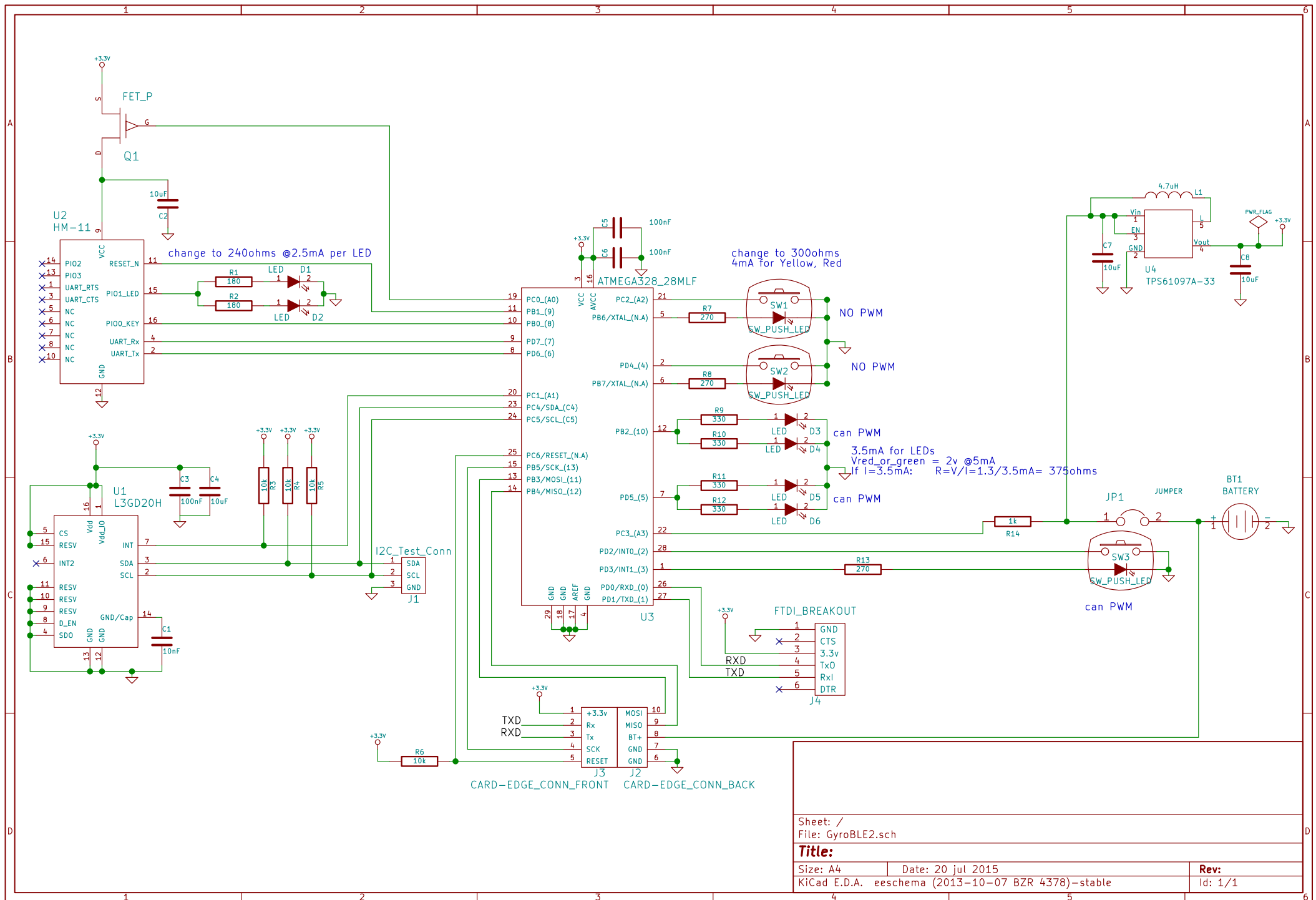


D4 = 0mA (Button)  
D5 = 0mA (2 LEDs)  
Reset = ?

XTAL2 = 0mA (ON/OFF switch)



Sheet: /  
File: GyroBLE2.sch

**Title:**

Size: A4 Date: 20 jul 2015

KiCad E.D.A. eeschema (2013-10-07 BZR 4378)-stable

**Rev:**

Id: 1/1